

HOW TO REPLACE THE CCRADIO (ALL VERSIONS) WHIP ANTENNA

Please follow the steps below to replace the CC Radio whip antenna.

- 1. REMOVE OLD ANTENNA:** Carefully extend the old antenna on your radio until the small Phillips-head screw is visible at its pivot point* and lift out the old antenna. See (Fig. 1) and (Fig. 2).
- 2. PREPARE NEW ANTENNA:** The new replacement antenna will need to be fully extended (Fig. 3) to expose the pivot with a screw attached. You will need to remove the Phillips screw from the pivot area and to remove the Base part of the antenna. The Base part (Fig. 4) will not be needed and can be discarded. You will only be replacing the top telescoping part of the antenna. **Do not attempt to open the radio as this will VOID any warranty.** Be careful to keep the small washers on either side of the screw hole.
- 3. POSITION THE NEW ANTENNA:** Slide the flattened end of the new antenna (with the screw hole) into the slot, placing a washer on either side, and then replace the screw. **Do not over tighten.** This completes the antenna replacement.

TIP: A small amount of Vaseline on the flat end can help hold the washers in place, and a toothpick through the center can help you line up the washers to the hole (See Fig. 5) before placing the screw.

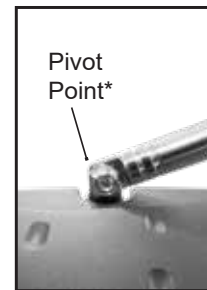


Fig. 1

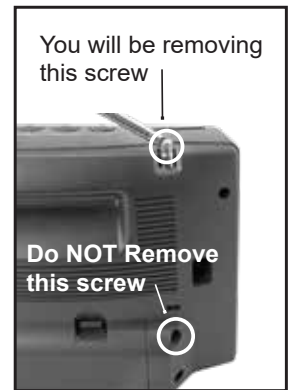


Fig. 2



Fig. 3

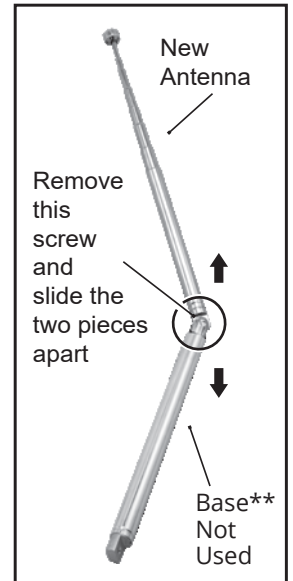


Fig. 4

If you have any questions or need technical assistance, please call our Tech Department at 800-522-8863, Monday through Friday between 9:00 AM and 5:00 PM PT. Closed for lunch 12:00 PM to 1:15 PM.

Note: Opening the radio case will void your warranty. The only part of the antenna that you need to replace is the visible portion from the pivot point up. If the bottom portion of the antenna is damaged, the radio will need to be sent in for repair.

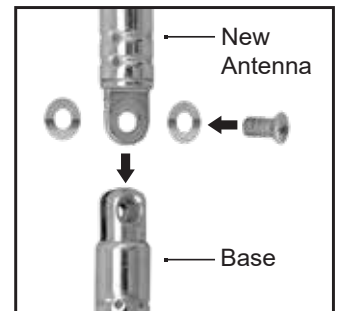


Fig. 5