

C.CRANE

# Versa WiFi USB Adapter 3

Quick Start Guide



PLEASE READ ALL INSTRUCTIONS COMPLETELY  
BEFORE USE AND SAVE THIS GUIDE FOR  
FUTURE REFERENCE

# FCC Interference Statement and Safety



## Federal Communication Commission Interference Statement

This equipment has been tested and found to comply with the limits for a Class B digital device, pursuant to Part 15 of FCC Rules. These limits are designed to provide reasonable protection against harmful interference in a residential installation.

Operation is subject to the following two conditions:

1. This device may not cause harmful interface, and
2. This device must accept any interface received, including interface that may cause undesired operation. This equipment generates, uses, and can radiate radio frequency energy and, if not installed and used in accordance with the instructions, may cause harmful interference to radio communications. However, there is no guarantee that interference will not occur in a particular installation. If this equipment does cause harmful interference to radio or television reception, which can be determined by turning the equipment off and on, the user is encouraged to try to correct the interference by one or more of the following measures:
  - a. Reorient or relocate the receiving antenna.
  - b. Increase the separation between the equipment and receiver.

## FCC Interference Statement and Safety

- c. Connect the equipment into an outlet on a circuit different from that to which the receiver is connected.
- d. Consult the dealer or an experienced radio technician for help.

Changes or modifications not expressly approved by the manufacturer could void the user's authority to operate the equipment.

### **CAUTION:**

1. **To comply with FCC RF exposure compliance requirements, a separation distance of 20 cm (about 8 inches must be maintained between the antenna of this device and all persons.**
2. This transmitter must not be co-located or operating in conjunction with any other antenna or transmitter.

THIS DEVICE COMPLIES WITH PART 15 OF THE FCC RULES. OPERATION IS SUBJECT TO THE FOLLOWING TWO CONDITIONS:

- (1) THIS DEVICE MAY NOT CAUSE HARMFUL INTERFERENCE, AND
- (2) THIS DEVICE MUST ACCEPT ANY INTERFERENCE RECEIVED, INCLUDING INTERFERENCE THAT MAY CAUSE UNDESIRE OPERATION.

## **Included Contents**

---

USB Adapter  
Software CD  
Quick Start Guide  
5 dBi Antenna  
Warranty Card



## Table of Contents

---

<b>FCC Interference Statement and Safety Instructions .....</b>	<b>2</b>
<b>Included Contents .....</b>	<b>4</b>
<b>Specifications .....</b>	<b>6</b>
<b>Introduction to Software Installation.....</b>	<b>7</b>
<b>Windows 2000 -10 Installation.....</b>	<b>8</b>
<b>Apple / Mac OS 10.4 – 10.8 Installation .....</b>	<b>16</b>
<b>FAQs and Troubleshooting.....</b>	<b>24</b>
<b>Warranty Information .....</b>	<b>27</b>

## **Introduction**

---

*Thank you for purchasing the Versa WiFi USB Adapter 3.*

*To ensure many years of service, please read this manual carefully.*

## Specifications

---

### Compatibility

- Windows 2000™ through Windows 10™
- Mac OS® 10.4 through 10.8
- Linux operating systems
- USB 1.1 - 2.0 interface
- 802.11b, 802.11g, and 802.11n
- WEP, WPA, and WPA2 encryption
- Wireless Routers up to 2.4 GHz  
(**Note:** Not compatible with 5 GHz Networks)

### Features

- High Power Reception
- 5 dBi Removable Antenna
- Up to 150Mbps file transfer rate

## **Introduction to Software Installation**

---

Since not all operating systems are the same (e.g. Windows, Apple/Mac), we have supplied installation directions for each type. Please read and follow each step of the installation and connection instructions for your operating system.

**Please install the software on the CD according to the instructions in this Quick Start Guide, BEFORE the antenna is plugged in.**

**Windows 7/8/10 users can automatically install the drivers without using the CD, provided that your computer is currently connected to the internet. With the internet connected, plug in the antenna to the computer and the drivers will install automatically.**

**Windows Vista users will need to use the CD to install the drivers.**

Windows is a registered trademark of Microsoft Corporation in the United States and other countries. Mac OS is a registered trademark of Apple Inc.

## Windows 2000 - 10 Installation

---

### Installation

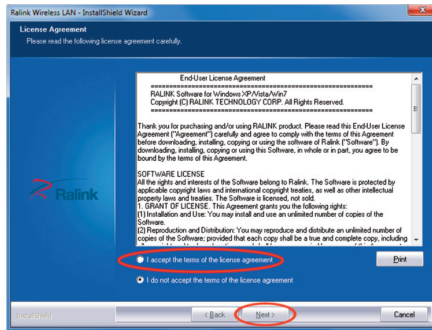
**NOTE: Please install the software on the CD according to the instructions in this Quick Start Guide, BEFORE the antenna is plugged in.**

1. Insert the supplied **CD** into your computer's **disk drive**. The setup software should start automatically after a few seconds. **Windows Vista/7/8/10** users, please read **Introduction to Software Installation** on page 7.
2. When the first screen appears, click "**Driver Installation**".
3. **Windows 7/8/10** will show an AutoPlay window. Click "**Run Autorun.exe.**" A security shield or message will appear in the Task Bar at the bottom of the screen. Click to open the message. Click "**Do you want to allow the following program to make changes to this computer?**" Click "**Yes**" or "**Allow**".

## Windows 2000 - 10 Installation



4. When the "License Agreement" screen appears, click "**I accept the terms ...**", then click "**Next**".

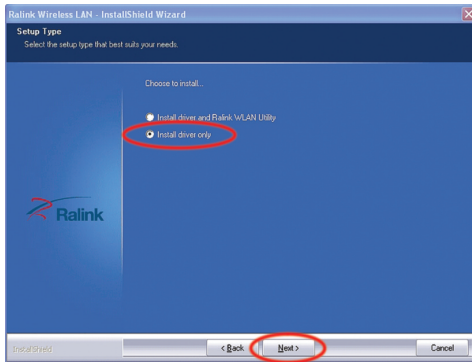


## Windows 2000 - 10 Installation

---

5. When the “Setup Type” screen appears, click “**Install driver only**”, then click “**Next**”.

**Note:** Installing the “**Driver Only**” is the easiest way to use your antenna. We recommend that only advanced users and Windows 2000 users install the Ralink WLAN Utility. For more assistance using the Ralink WLAN Utility, refer to the full user manual on the supplied CD.



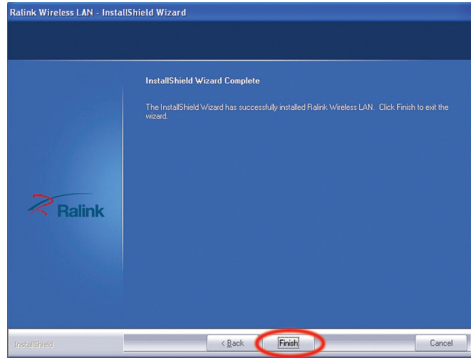
6. Click “**Install**” to continue the installation.

---

## Windows 2000 - 10 Installation

---

7. When the computer has finished installing the driver, click “**Finish**” to exit the setup and begin using your antenna.



8. Connect the **Versa WiFi USB Antenna 3** to your computer's **USB port**.

## Windows 2000 - 10 Installation

---

### Connecting to a WiFi Site

Access the built-in Windows wireless utility using the icon that shows up in the clock task bar. For each Windows operating system, the utility works differently. Please follow the directions below.

#### **Windows XP**

1. Left click the icon below. A small window will appear titled "Wireless Network Connection Status".



**Note:** If there is more than one wireless icon that appears in this area, hover your cursor over each icon and choose the one with highest number after "Wireless Connection" (example: "Wireless Connection 2").

2. Left click "View Wireless Networks".
3. Left click the network of your choice from the list, then left click "Connect".



---

## Windows 2000 - 10 Installation

**Note:** If the network site shows “Security-enabled wireless network”, you are required to enter the correct key to make a successful connection. If the network site shows “Unsecured Wireless Network” then a key is not required before connecting. Successful connection to a wireless network usually requires a minimum of 2 bars of signal.

4. Once connected to the network, you will be able to access the internet using your default web browser (provided that the network offers internet access).

### *Windows Vista*

1. Left click the icon below. A small window will appear titled "Wireless Network Connection Status".



2. Left click "**Connect to a Network**".
3. Left click the network of your choice from the list, then left click "**Connect**".

## **Windows 2000 - 10 Installation**

---

**Note:** If the network site shows “Security-enable wireless network”, you are required to enter the correct key to make a successful connection. If the network site shows "Unsecured Wireless Network" then you will not need to enter a key before connecting. Successful connection to a wireless network usually requires a minimum of 2 bars of signal.

4. Once connected to the network, you will be able to access the internet using your default web browser (provided that the network offers internet access).

### ***Windows 7, 8, and 10***

1. Left click the icon below. A small window will pop up showing wireless networks that can be detected.



**Note:** If you have built-in WiFi in your computer, you may have to scroll down the list of networks to see the additional ones that your new antenna can detect. Successful connection to a wireless network usually requires a minimum of 2 bars of signal.

## **Windows 2000 - 10 Installation**

---

2. Left click the network of your choice from the list, then left click "**Connect**".
3. Once connected to the network, you will be able to access the internet using your default web browser (provided that the network offers internet access).

### ***Windows 2000***

**Note:** Since Windows 2000 does not have its own built-in wireless utility, you will be required to install the Ralink WLAN Utility from the CD. Refer to the full user's manual supplied on the CD for more assistance.

## Mac OS 10.4 - 10.8 Installation

---

**NOTE: Please install the software on the CD according to the instructions in this Quick Start Guide, BEFORE the antenna is plugged in.**

1. Insert the supplied **CD** into your computer's **disk drive**.

2. Double click on the **CD icon**.



3. Double click on the **“Mac”** folder.



4. Double click on your Mac OS version.

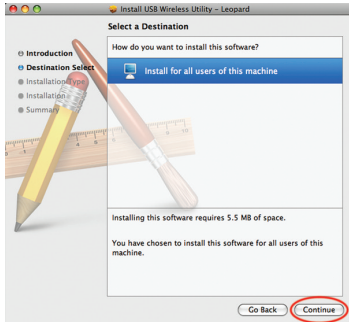


5. When the “Introduction” screen appears, click **“Continue”**. (10.7 screen appears slightly different.)

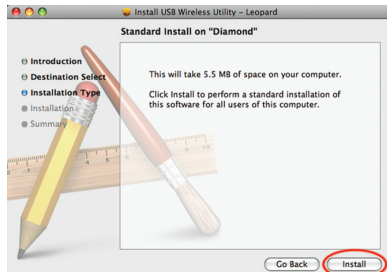


## Mac OS 10.4 - 10.8 Installation

- When the “Destination Select” screen appears, click “Continue”.



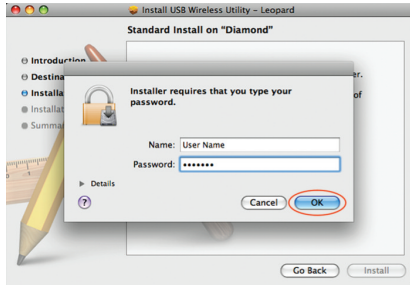
- When the “Installation Type” screen appears, click “Install”.



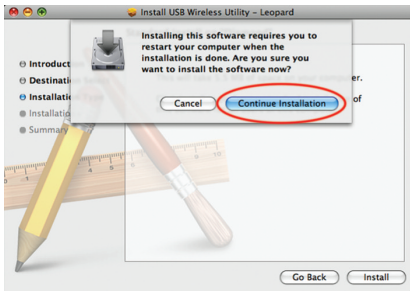
## Mac OS 10.4 - 10.8 Installation

---

8. When prompted, enter your **“Name”** and **“Password”**. (10.7 - **“OK”** button is **“Install Software”**).



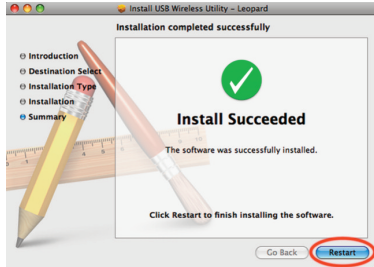
9. When prompted, click **“Continue Installation”**.



---

## Mac OS 10.4 - 10.8 Installation

10. When the “Summary” screen appears, click “Restart”.



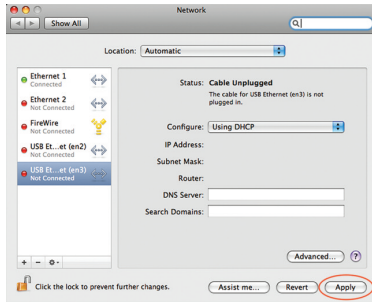
**Note:** During Restart, an “Updating Boot Caches” screen may appear. Click “OK” and the restart will continue.

11. When the computer is fully powered on, plug in the **Versa WiFi USB Adapter 3** into your computer’s **USB port**.

## Mac OS 10.4 - 10.8 Installation

---

12. **MAC OS 10.5 and MAC OS 10.6 users:** Click “**Network Preferences ...**” and then click “**Apply**” to activate the antenna. (10.7 & 10.8 skip this step).



- MAC OS 10.4 users:** Go to the “**System Preferences**” panel and then click “**Network**”. A message displays “**New Port Detected**”. Click “**OK**” and then click “**Apply**” to activate the antenna.

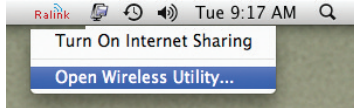




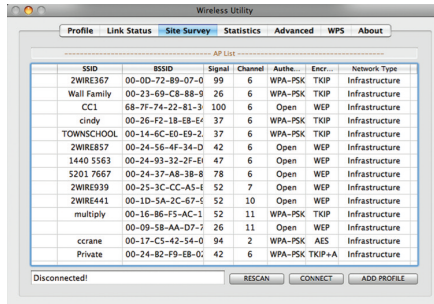
## Mac OS 10.4 - 10.8 Installation

### Connecting to a WiFi Site

1. From the top menu bar, click **“Ralink”**, and then **“Open Wireless Utility”** from the drop down menu, or find the **“Ralink Wireless Utility”** in the **“Applications”** menu. (The Utility may appear automatically when antenna is plugged into USB port.)

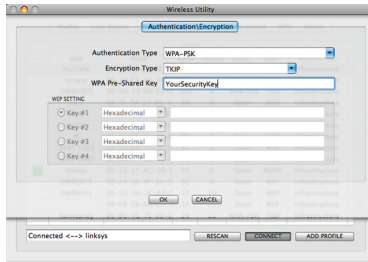


2. Select your desired WiFi network from the **“Site Survey”** list, then click **“Connect”**. Begin **10.7** here.

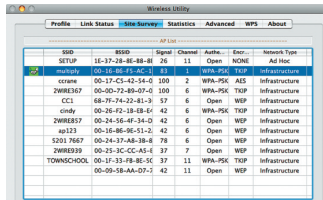


## Mac OS 10.4 - 10.8 Installation

3. If the selected network requires a WPA security key, enter it into the corresponding space. If your network requires a WEP key, then enter it into the space after “Key #1” Hexadecimal. Then click “OK”.



4. When you are successfully connected to the wireless site, a handshake icon will appear in the first column, next to your SSID (network name). At this point, you will be able to access the internet using your default web browser.

The image shows the main window of the Wireless Utility application. The 'Site Survey' tab is selected, displaying a table of nearby wireless networks. The table has columns for SSID, BSSID, Signal, Channel, Auth., Encr., and Network Type. A handshake icon is visible in the first column next to the SSID 'LINKSYS'.

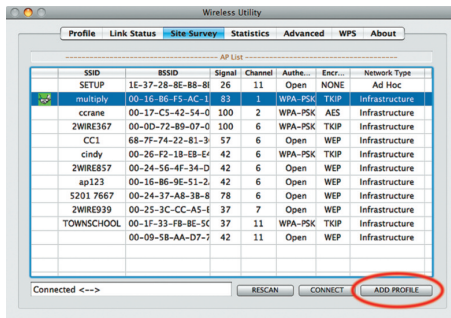
SSID	BSSID	Signal	Channel	Auth.	Encr.	Network Type
SETUP	1E-37-28-8E-88-8F	20	11	Open	None	Ad Hoc
LINKSYS	00:17:8E:35:0E:8E	18	11	WPA-PSK	TKIP	Infrastructure
remex	00:0D:72:89:07:0	100	2	WPA-PSK	AES	Infrastructure
CC1	68-79-3A-23-81-3E	37	6	Open	WEP	Infrastructure
only	00-16-F2-18-69-61	42	6	WPA-PSK	TKIP	Infrastructure
ZWR8537	00-24-36-4F-34-0	42	6	Open	WEP	Infrastructure
wp13	00-16-86-9E-51-0	42	6	Open	WEP	Infrastructure
S201 7667	00-24-37-A8-38-8	78	6	Open	WEP	Infrastructure
ZWR8539	00-23-3C-CC-A5-1	37	7	Open	WEP	Infrastructure
TONNSCHOOL	00-17-31-68-8E-5E	37	11	WPA-PSK	TKIP	Infrastructure
	00-09-5B-AA-07-1	42	11	Open	WEP	Infrastructure

---

## Mac OS 10.4 - 10.8 Installation

### Creating a Profile

We recommend that you create a profile for your wireless connection so that you will not need to re-enter your network information every time your computer is turned on. To get started, click your desired SSID from the “**Site Survey**” list, then click “**Add Profile**”. You will need to re-enter your wireless security key again, then click “**OK**”.



1. Once your profile is complete, you can activate it by selecting it from the “**Profile**” tab and then click “**Activate**”.

## FAQs and WiFi Troubleshooting

---

- Q.** *My computer is not showing that the antenna is plugged in. What is wrong?*
- A.** Check the connection between the antenna and the adapter to be sure they are tightly connected. Make sure the USB adapter is securely plugged in. You can also try an alternate USB port.
- Q.** *I have Windows Vista /7/8/10 and inserted the software CD. I clicked on "Run Autorun.exe" but nothing is happening.*
- A.** Check the bottom Task Bar area for a security shield or message that is asking permission to install the software. Also, if your computer has a third party Firewall or Virus protection installed, you may have to disable it. Please read the manufacturer's instruction manual.
- Q.** *My software shows that the antenna is connected but when I try to use my internet browser I am unable to view anything. What should I do?*
- A.** You may not have a strong enough WiFi connection. Successful connection to a wireless network usually requires a minimum of 2 bars of signal. If the signal is low, you can try relocating or repositioning the antenna with a better line-of-sight view to the WiFi

## FAQs and WiFi Troubleshooting

---

source; or the wireless network does not offer internet service; or a firewall/virus protection is preventing access.

- Q.** *I purchased the Versa WiFi USB Adapter 3 and when it is hooked up it does not improve my WiFi reception. Is there something I can do to make it work better?*
- A.** Be sure that the antenna is positioned vertically. If the WiFi source is outside your location, then it is a good idea to use your computer in front of a window that faces the direction of the wifi signal.
- Q.** *Can I use a USB extension cable with the Versa WiFi USB Adapter 3?*
- A.** Yes, the Versa WiFi USB Adapter 3 should work with up to 15 ft. of USB extension cable.
- Q.** *Can I use a larger antenna with the Versa WiFi USB Adapter 3 for better reception?*
- A.** Yes, the included antenna is removable so it is possible to attach a larger antenna for more reception.

## FAQs and WiFi Troubleshooting

---

- Q.** *Is there a location on the web to download another copy of the software CD?*
- A.** Yes, see the C.Crane web site at this address:  
[www.ccrane.com/Versa3](http://www.ccrane.com/Versa3)
- Q.** *My computer is a Mac and I connect to a secure network, but every time I shut my computer down, I have to re-enter the Encryption Key.*
- A.** Connect to the network and click on **“Add Profile”**. See **“Creating a Profile”** on page 23 for more information.
- Q.** *My computer has an internal WiFi antenna; is it necessary to disable it before installing the software and the Versa WiFi USB Adapter 3?*
- A.** It is not required, but it is recommended. If both WiFi connections are going at the same time, it will require more power from your computer and create extra heat. Usually there is a button, switch, or key on a portable computer that disables the built-in WiFi device.

## FAQs and WiFi Troubleshooting

---

- Q.** *Can I use the antenna with my iPad® or iPhone® to increase my WiFi reception?*
- A.** No. The Versa WiFi USB Adapter 3 requires installation of software drivers. The iPad® and iPhone® are not capable of installing software drivers.
- Q.** *What do the blue and red lights on the antenna mean?*
- A.** The flashing blue light means the antenna is getting power and the intermittent red light means the antenna is communicating with the computer.

For more troubleshooting and FAQs, see the C. Crane web site at: [www.ccrane.com/Versa3](http://www.ccrane.com/Versa3)

## One Year Limited Warranty

---

C. Crane warrants this product to be free from defects in material and workmanship under normal use and conditions for a period of one year from the date of original purchase on parts and labor. Should service be necessary for any reason due to a manufacturing defect or malfunction during the warranty period, C. Crane at its sole discretion, will repair or replace the defective merchandise at no charge, upon receipt of this item at its service center with a copy of proof of date of purchase. The consumer purchaser is responsible for shipping the unit to C. Crane's service center. In order to obtain performance of any obligation under this warranty or any implied warranty, the consumer purchaser must:

- 1) Carefully pack the unit in the original packing cartons or a suitable, well padded corrugated box.
- 2) Call 1-800-522-8863 for a Return Authorization (RA) number, and mark the RA number on the outside of the packing carton. Also enclose a copy of proof of date of purchase and a note describing your specific problem.
- 3) Ship the unit **insured for full retail value** via Parcel Post or a common carrier of your choice.

NOTE: This warranty does not cover:

- A) Adapters that have been misused, neglected or damaged by accident.
- B) Adapters that have been opened, repaired or altered by persons other than C. Crane.

This warranty is valid **only** in the United States of America and Canada and extends only to the original consumer purchaser. Any applicable implied warranties, including the warranty of merchantability, are limited in duration to a period of one year from the date of the original purchase at retail and no warranties, whether expressed or implied, shall apply to this product thereafter. Under no circumstances shall C. Crane be liable for any loss or damage, direct or consequential arising out of the use of, or inability to use this product, (some states do not allow limitations on implied warranties or exclusion of consequential damage, therefore, these restrictions may not apply to you).

This warranty gives you specific legal rights and you may also have other rights that may vary from state to state.

Copyright © 2013 C. Crane. All rights reserved.



## Optional Accessories

---

Available at [ccrane.com](http://ccrane.com) or call: 1-800-522-8863



### **14dBi Indoor/ Outdoor 2.4 GHz WiFi Antenna**

Boost your WiFi significantly. Whether you put it in a window or mount it outdoors this 14dBi antenna will give you a major boost in your WiFi signal.



### **Point To Point WiFi Antenna**

This 15dBi outdoor antenna is the best we have tested for point to point applications over long distances. In our tests, it provided a much stronger signal than other Yagis claiming the same gain, and at half the size.



### **High-Gain 8dBi 2.4 GHz Outdoor WiFi Antenna**

Send and receive WiFi clearly, without having to worry about your mid-range signal being dropped. This high-gain antenna is omnidirectional and for outdoor use. Powerful, rugged, and weatherproof!

Copyright © 2015 by C. Crane  
Fortuna, CA 95540

Phone: 1-800-522-8863    Web: [ccrane.com](http://ccrane.com)

All rights reserved. No part of this booklet may be reproduced,  
in any form or means whatsoever, without permission in writing  
from C. Crane.