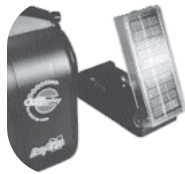


Accessories

9v AC Adapter: Use your Freeplay Radio like a regular radio by plugging it into any household electric outlet. Note: The LED Light will not work unless wound up by hand-crank.
Item #9BA \$12.95

Solar Adapter: Let the sun run your Freeplay Radio. It will even work under a strong incandescent light. It will even charge two Nicad batteries at the same time. Has a 6' cord.
Item #SBA \$19.95



SW Antenna: This antenna clips to the built-in telescoping antenna and extends 23 feet. The end clips to a curtain, etc. This portable antenna will enable you to listen to many more shortwave stations.
Item #BSA \$19.95



SELF POWERED ENERGY

Radio With A Light



Thank you for purchasing the Freeplay Radio with a Light.

The C. Crane Company, designed the LED light for the Freeplay Radio to make it more useful in a power outage. We have written this to help you get the most out of your new radio and to answer some frequently asked questions about the Freeplay Radio with a Light. Please read this information sheet and if you have any questions call us.

Getting Started

While facing the radio, locate the fold out crank on the right-hand side of the radio. Pull it out and wind it in a clockwise direction for 60 full turns. This will power the radio for approximately 30 minutes. The radio will not run more than 30 minutes.

Note: The Freeplay Radio may not run a full 30 minutes for the first 10 to 25 cycles.

The on/off switch is located on the left side of the radio.

Also on the left hand side is the volume knob, band selector switch and tuning knob. The jack labeled 3V - 9V is used for optional power accessories, such as the 9V adapter or the solar adapter (shown on the back cover).

Band selection: The bottom position is FM, the middle position is the AM (listed on the radio as MW or mediumwave), and the top position is the SW.

Tuning: The knob on the left side of the radio is for general tuning. For fine tuning, use the tuning wheel on the front of the radio.

The LED light: This white LED is part of a new generation of bright light emitting diodes. These lights are virtually unbreakable and should last a very long time. The light will come on only if the radio is wound. The cord on the light will extend up to 12'. Just pull on the connector and unreel it to your desired length. The jack labeled lamp on the back of the radio is for the LED light.

The black base of the light actually opens up to reveal a handle that is used to reel the cord back in. The base is also a magnet so you can mount it to any metal surface like a refrigerator or a car. Using the light with the radio will not decrease the playing time of the radio.



Listening Tips

AM Listening: AM listening is generally better in the evening -- this is primarily due to atmospheric conditions. While listening to AM the telescopic antenna should be down. After tuning in *(Shown as MW on the switch.)* the station you may have to rotate the radio for the best reception.

FM Listening: For best FM reception extend the telescopic antenna and direct it for maximum signal strength.

SW Listening: Generally speaking, frequencies from Asia are received best during the morning. Europe is received best during the evening. The middle of the day is not a very good time to attempt listening to shortwave, but there are some broadcasts if you're determined and have a good antenna.

For best reception, fully extend the telescopic antenna and fine tune the reception with the fine tuning wheel located on the front of the radio.

Troubleshooting Guide

Q. *What should I do if I my light won't come on?*

A. The bulb may be loose, try unscrewing the light bulb and screwing it back in. First, open the base and hold the handle so the base doesn't rotate while screwing the light in and out. If that doesn't work, try turning down the volume on the radio. The light will flicker at high volumes.

Q. *My Freeplay Radio doesn't run for a full 30 minutes. Why?*

A. The spring-wound generator that powers the radio may take between 10 and 25 cycles to reach full efficiency. This is the normal break-in period.

Q. *When I wind up the radio, it makes noise. Is this normal?*

A. Yes. The generator does make some noise in the process of winding and unwinding. Sometimes it is a clicking or a hum. The noise shouldn't interfere with the performance of the radio.

Q. *How bright should my light be?*

A. The light is about as bright as one candle. It will help you get around a room without bumping into things.

Q. *How many times can I wind up the radio?*

A. The radio is rated to last 10,000 full windings.