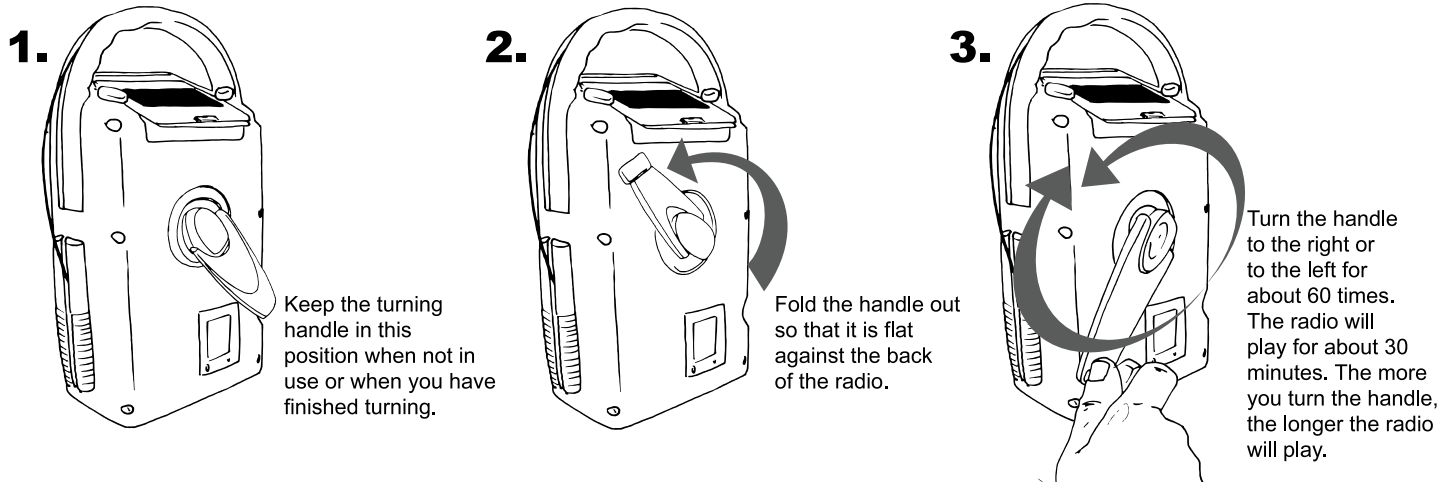
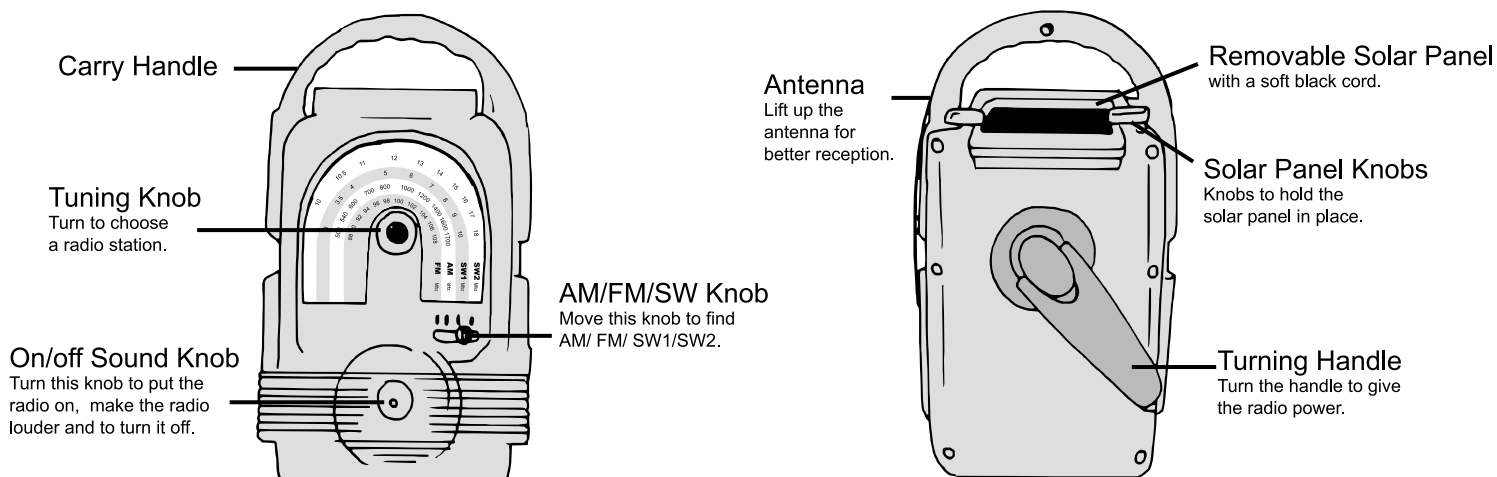
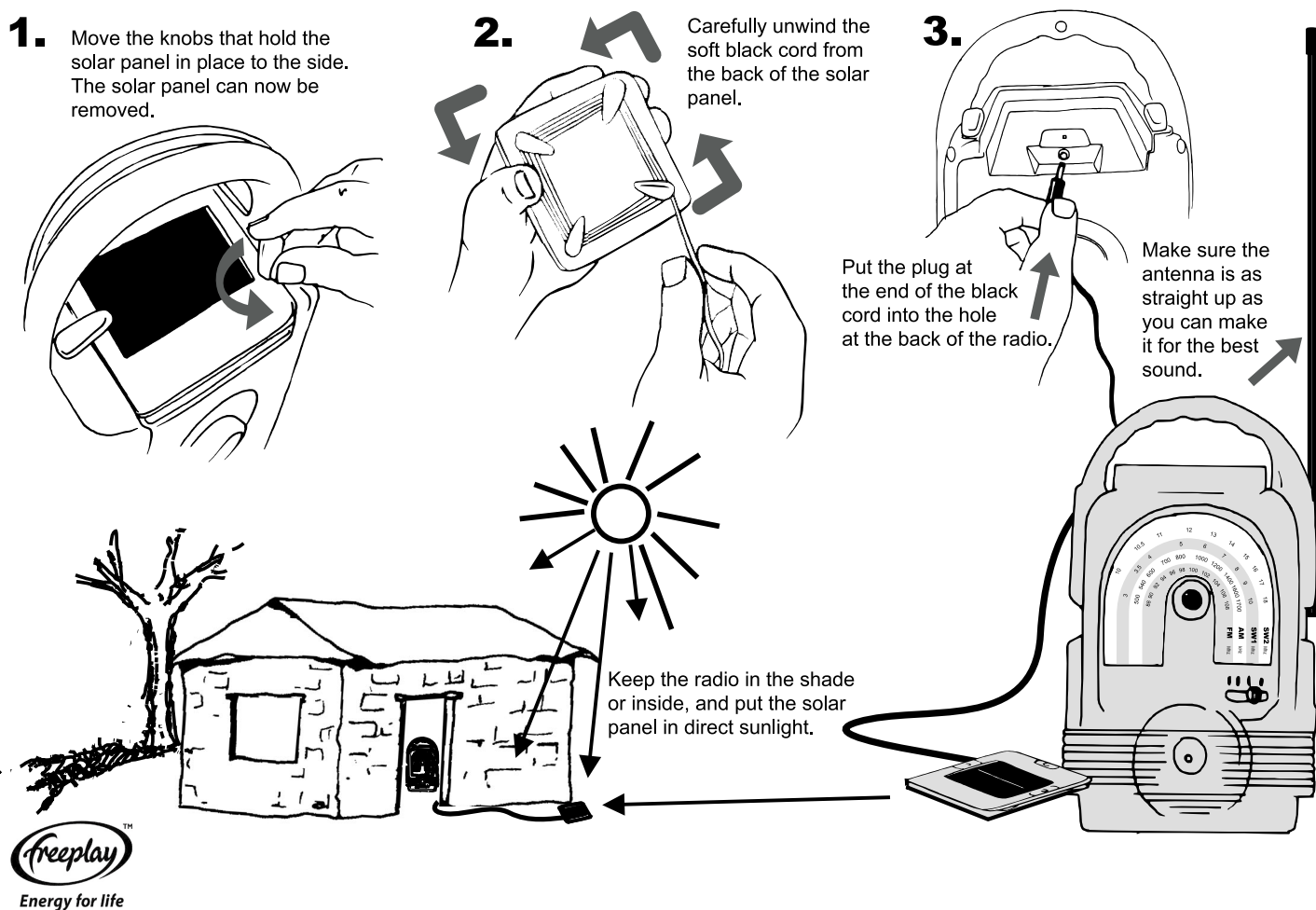


# HOW TO USE YOUR FREEPLAY WIND-UP AND SOLAR POWERED RADIO

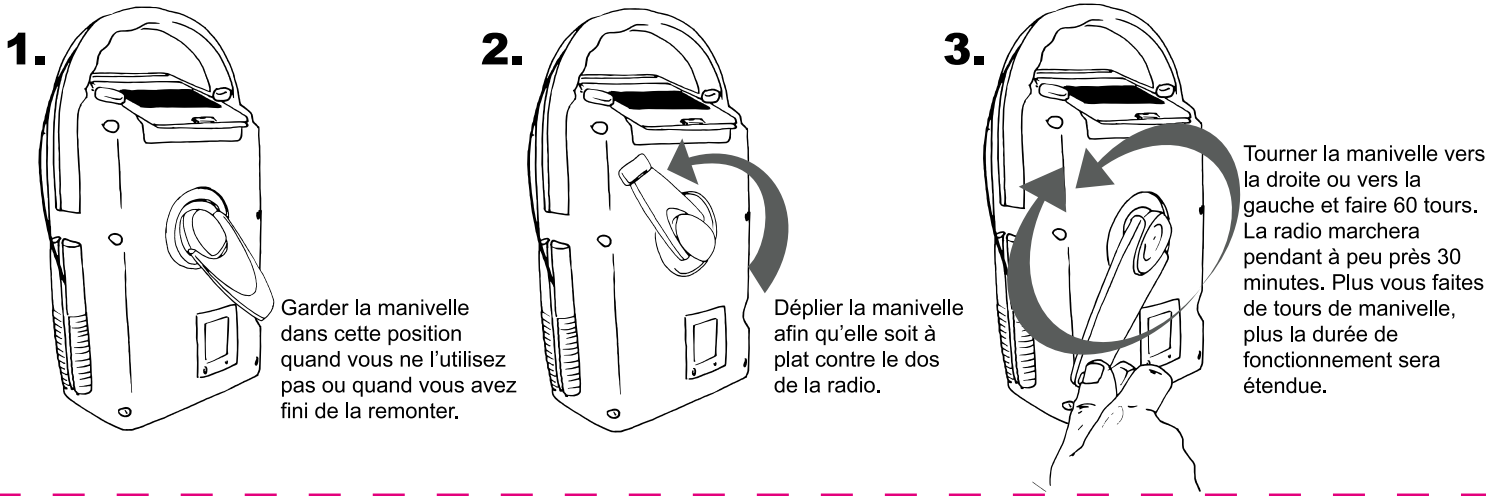
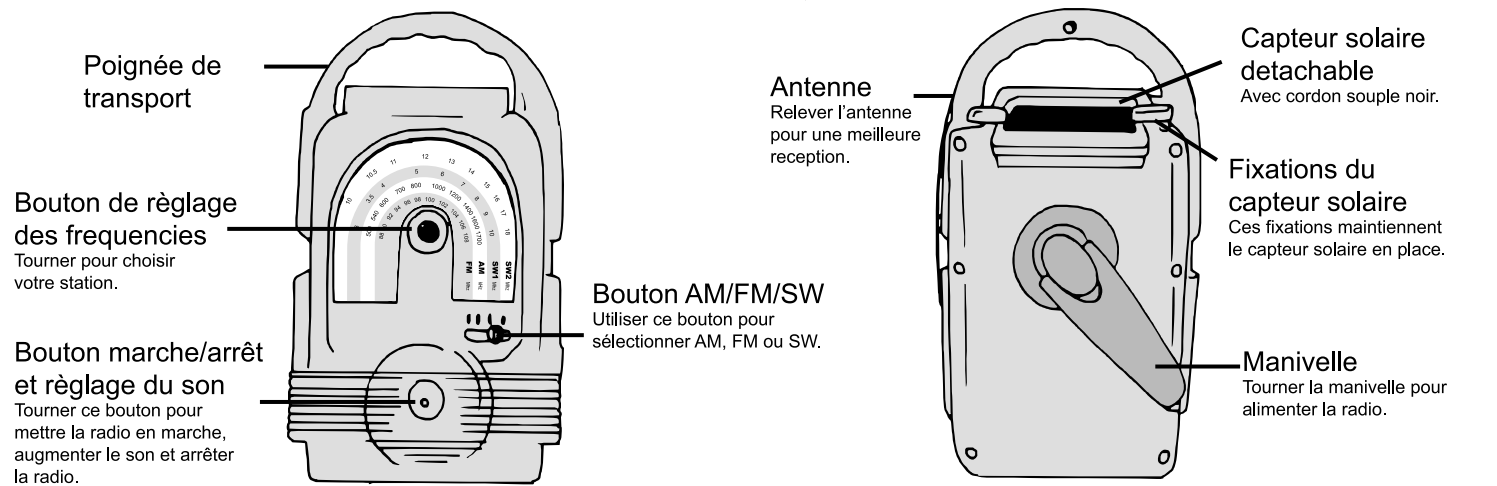


## How to Use the Removable Solar Panel

The solar panel will only work in bright sunlight.

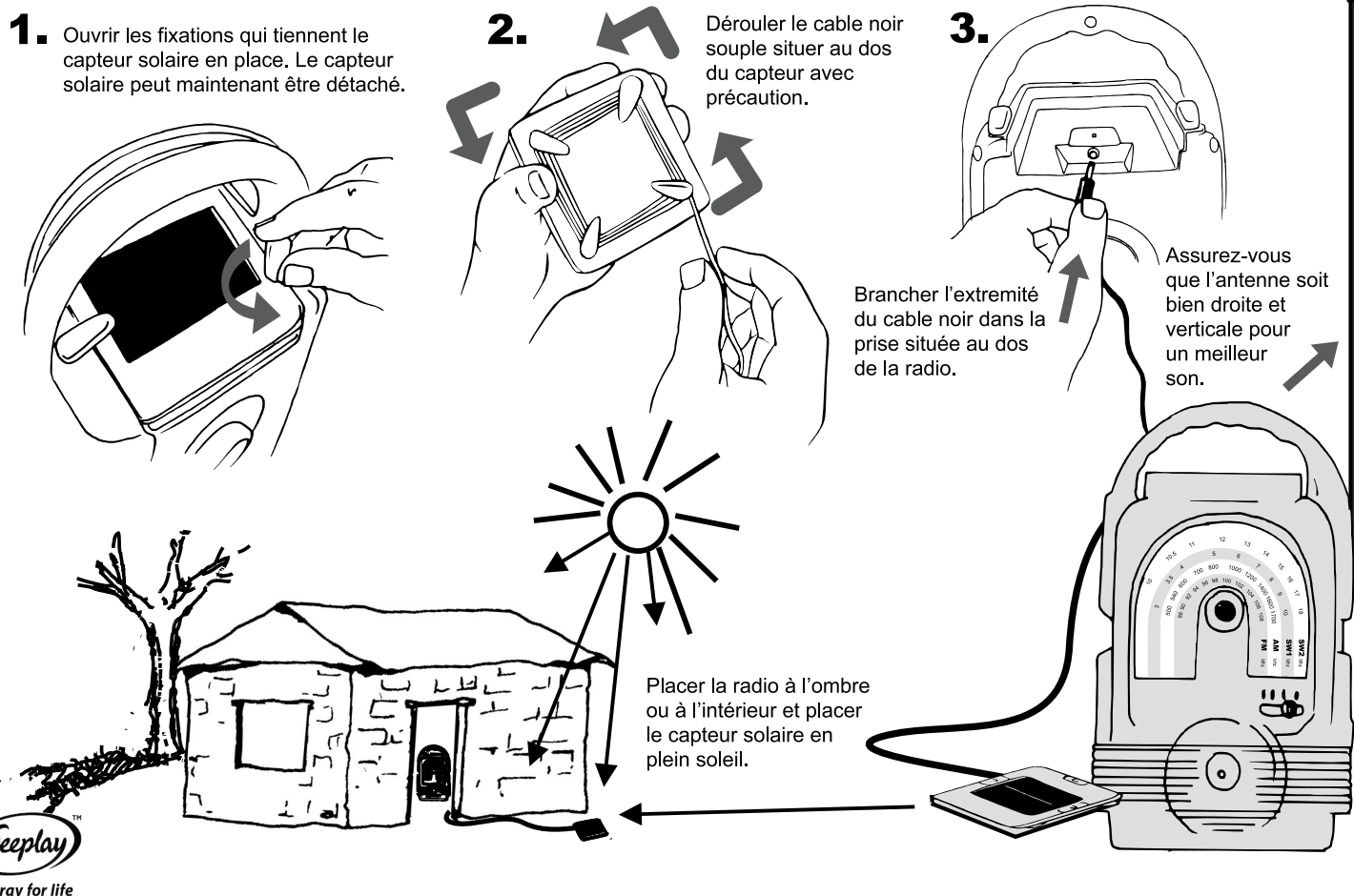


## COMMENT UTILISER VOTRE RADIO FREEPLAY À ÉNERGIE MÉCANIQUE ET SOLAIRE

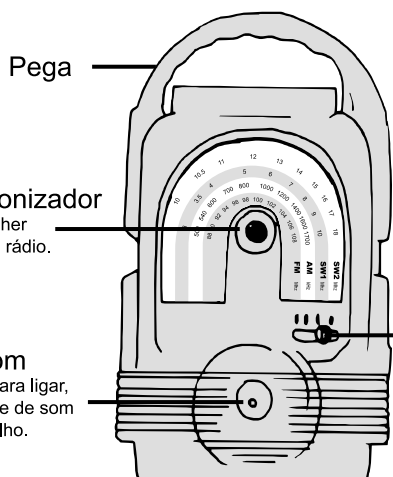


## Comment utiliser le capteur solaire detachable

Le capteur solaire ne fonctionnera qu'une fois exposé au soleil.



## COMO USAR O SEU RÁDIO DE CORDA E ENERGIA SOLAR FREEPLAY



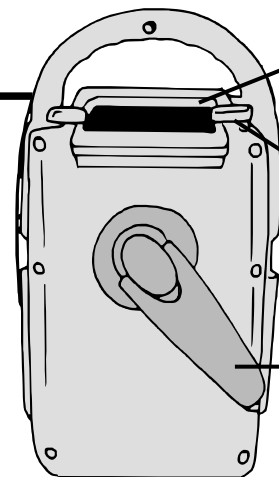
Pega

**Botão Sintonizador**  
Girar para escolher uma estação de rádio.

**Botão do Som**  
Girar este botão para ligar, aumentar o volume de som e desligar o aparelho.

**Botão para AM/FM/SW**  
Mover este botão para encontrar AM/FM/SW1/SW2.

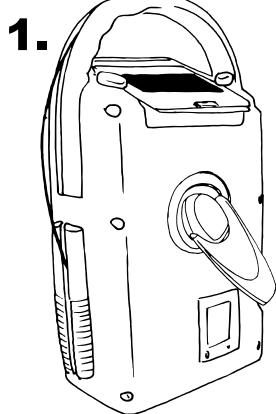
**Antena**  
Levantar a antena para uma melhor recepção.



**Painel Solar Removível**  
com um arame preto macio.

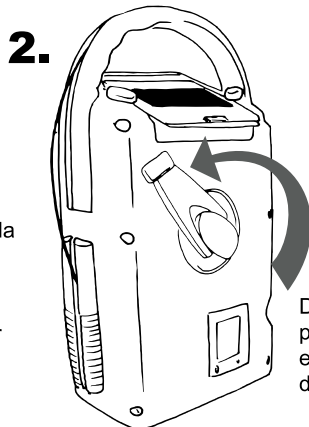
**Botões do Painel Solar**  
Botões para manter o painel solar no lugar.

**Manivela**  
Girar a manivela para carregar o rádio.



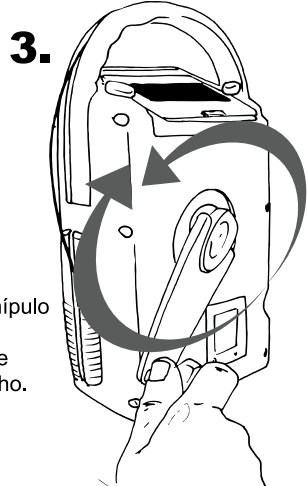
1.

Manter o manipulador da corda nesta posição quando não estiver em uso ou quando tiver acabado de dar à corda.



2.

Desdobrar o manipulador para que fique encostado à parte de trás do aparelho.



3.

Dar cerca de 60 voltas ao manipulador, para a esquerda ou para a direita. O rádio há-de tocar durante perto de 30 minutos. Quantas mais voltas der o manipulador, mais tempo toca o rádio.

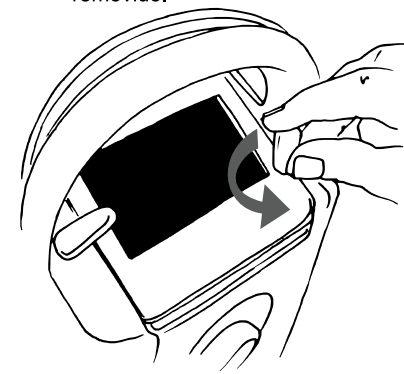
## Como Usar o Painel Solar Removível

O painel solar só trabalha à luz brilhante do sol.

1. Afastar para o lado os botões que mantêm o painel solar no lugar. O painel solar pode agora ser removido.

2. Desenrolar cuidadosamente o arame preto macio de trás do painel solar.

3. Colocar a cavilha da extremidade do arame preto macio no buraco atrás do rádio. Para uma boa recepção, certificar que a antena está estendida para cima.

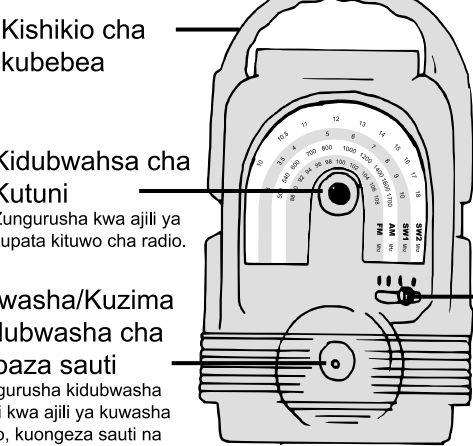


Manter o rádio à sombra ou dentro de casa e deixar o painel solar à luz directa do sol.



freeplay  
Energy for life

## MAELEZO YA JINSI KUTUMIA RADIO YAKO YA KUNYONGA YA FREEPLAY NA RADIO INYOTUMIA NISHATI YA JUA



**Kishikio cha kubebea**

**Kidubwaha cha Kutuni**  
Zungurusha kwa ajili ya kupata kituwo cha radio.

**Kuwasha/Kuzima Kidubwaha cha kupaza sauti**  
Zungurusha kidubwaha hichi kwa ajili ya kuwasha radio, kuongeza sauti na kuzima radio.

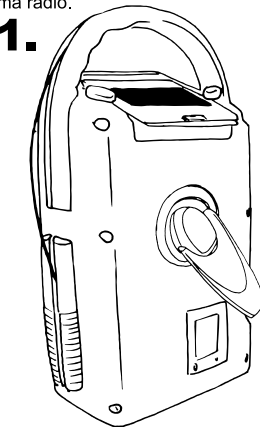
**Kidubwaha cha AM/FM/SW**  
Zungurusha kidubwaha hichi Kupata stationi za AM/FM/SW1/SW2.

**Kipapasio**  
Inuwa na vuta kipapasio kwa kuboresha kushikwa sauti.

**Kifaa cha Nishati ya Jua**  
kilicho na nyayo laini iliyonyeusi.

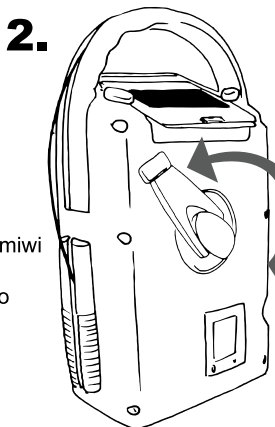
**Vidubwaha vya Kifaa Cha Nishati ya Jua**  
Vidubwaha vya kushikiza kifaa cha nishati ya jua.

**Mkono wa Kuzungurusha**  
Zungurusha mkono kwa ajili ya kuipa radio nishati.



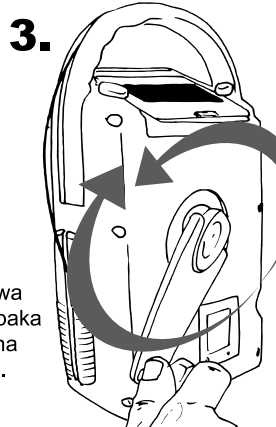
1.

Ikiwa mkono wa kuzungurusha hautumiwi ama unapomaliza kuzungurusha mkono Egesha mkono Wa kuzungurusha katika Hali hii.



2.

Kunjuwa mkono wa kuzungurusha mpaka uwe sambamba na mgongo wa radio.



3.

Zungurusha mkono wa radio kuelekea upande Wa kulia ama wa kushoto takriban mara sitini. Radio hiyo itacheza kwa muda wa takriban dakika 30. Kadiri ukizidisha kiasi cha Kuzungurusha mkono ni jinsi muda wa kusikiliza utakavyozidi.

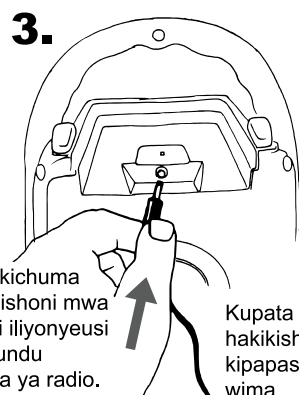
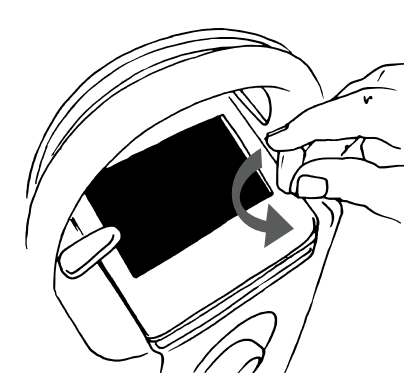
## Jinsi ya Kutumia Kifaa cha Nishati ya Jua

Kifaa cha nishati ya jua kitafanya kazi katika mwanga mkali wa jua.

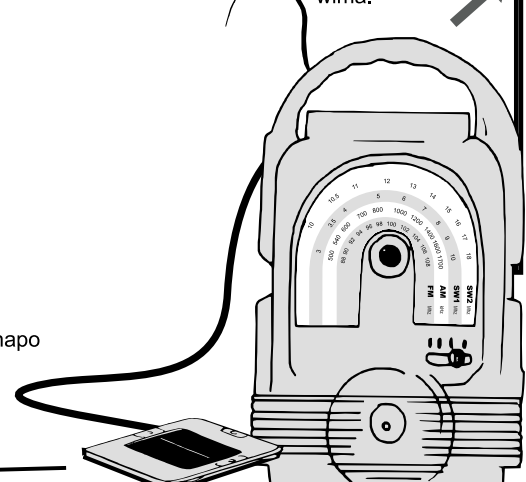
1. Sogeza kando vidubwaha vinavyoshikiza kifaa cha nishati ya jua. Kifaa cha nishati ya sasa kinaweza kutolewa.

2. Kujuwa kwa uwangalifu nyayo nyeusi iliyolaini iliyonyuma ya kifaa cha nishati ya jua.

3. Chomeka kichuma kilicho mwishoni mwa nyayo laini iliyonyeusi ndani ya tundu lilopo numa ya radio. Kupata sauti nzuri, hakikisha kwamba kipapasio kipo wima.



Weka radio kivulini au hapo na nyayo nyeusi iliyolaini iliyonyuma ya kifaa cha nishati ya jua nje katika mwanga wa jua uliyomkali.



freeplay  
Energy for life